



Product Catalog



MOW & TRACK SAFETY PRODUCTS FOR THE RAIL INDUSTRY

nolancompany.com



PRODUCT INDEX

AXLE ASSEMBLIES	16, 17
BUMPING POSTS	19
CAR BLOCKS	22
CAR STOPS	20, 21
DERAILS, HINGED	4
DERAILS, HINGED SPRING ASSIST	5
DERAILS, PORTABLE	2
DERAILS, SD AUTOMATED OPERATORS	8
DERAILS, SD MANUAL OPERATING STANDS	7
DERAILS, SLIDING	6
FLASHING LIGHTS	25
KNUCKLE CARRIER	1
PUSH CARS	18
RAIL DOLLIES	14
RAIL PULLERS	14
RAIL SKATES	23
RERAILERS	9
SIGNAL FLAGS	27
STAFFS	26
STORAGE BOX, PORTABLE DERAIL	3
SWITCH POINT PROTECTORS	24
TOOL AND SUPPLY CARTS, ALUMINUM	12
TOOL AND SUPPLY CARTS, BRAKING SYSTEMS	13
TOOL AND SUPPLY CARTS, STEEL	10, 11
TOW BARS	18
TRACK DOLLIES	15
WHEEL CHOCKS	28
WHEELS, REPLACEMENT	16, 17

Experience the Next Generation of Knuckle Carriers

The Nolan Company is proud to introduce a new addition to our patented Knuckle Carrier line, model KC-2.

Models **KC-1** and **KC-2** are designed specifically for railroad professionals who need a safe, efficient, and easy way to transport heavy train knuckles from engine lockers to repair sites.

Never struggle to carry a knuckle again.



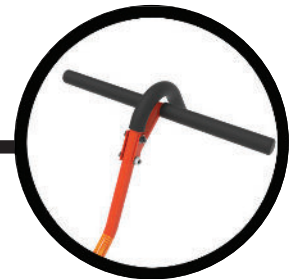
Watch the
Knuckle Carrier
in Action!



KC-1



KC-2



T-Handle



Knuckle Pin Holder



KC-1 (15 lbs)

- Slim 3" tire navigates large rock, sediment & water
- Self-balancing & compact for easy storage
- Perfect for uneven, rugged terrain

KC-2 (25 lbs)

- Wider 6" tire easily moves over ballast & sand
- Designed for lighter, softer terrain
- Equally self-balancing & durable

New Accessories Available

- T-Handle for 2-person transport - *sold separately*
- Knuckle Pin Holder for secure, convenient carrying

Built to Make Your Job Easier!

✓ **Durable** ✓ **Compact** ✓ **Self-Balancing** ✓ **All-Terrain Tire**

nolancompany.com





PORTABLE DERAILS

LOW-PROFILE PORTABLE DERAILS: PD-4, PD-6

FEATURES:

- Fabricated from High-Strength Steel
- Will Derail All Rolling Stock Including 6 Axle Mainline Locomotives
- PD-6 Covers Broader Range of Rail Sizes (80-141 lbs)
- Available in Left and Right-Hand Throw
- Sits only 2-3/4" (69.85 mm) Above the Top of Rail Head
- Lightweight
- No Special Tools Required to Install
- Can be Padlocked to the Rail Head to Ensure Visibility and Safety, as well as, Prevent Unauthorized Removal



PD-6



SCAN CODE TO WATCH INSTALLATION VIDEO



PD-6 with PDF-LP Staff and RF-2D Flag

MODEL #	THROW DIRECTION	RAIL SIZE	WEIGHT
PD-4L	LEFT	4-5/8" to 6-1/2" (70-110 lbs.)	42 lbs. (19.05 kg)
PD-4R	RIGHT	4-5/8" to 6-1/2" (70-110 lbs.)	42 lbs. (19.05 kg)
PD-6L	LEFT	5" to 7-7/16" (80-141 lbs.)	42 lbs. (19.05 kg)
PD-6R	RIGHT	5" to 7-7/16" (80-141 lbs.)	42 lbs. (19.05 kg)
PDF-LP	STAFF FITS PD-4 AND PD-6		5.50 lbs. (2.49 kg)

NOTE: FLAGS, STAFFS, AND TARGET STANDS SOLD SEPARATELY.

PORTABLE DERAIL: PD-2 (MINES/QUARRIES)



FEATURES:

- Designed Specifically for Mines
- Fits 20-60 lb Rail
- Sits 3-1/4" Above Rail

MODEL #	LENGTH	RAIL SIZE	WEIGHT
PD-2	19-3/4" (501.65 mm)	2-5/8" to 4-1/4" (20-60 lbs.)	43 lbs. (19.50 kg)
PDF	STAFF FITS PD-2		5 lbs. (2.27 kg)



DESIGNED TO STORE & PROTECT NOLAN PORTABLE DERAILS

FEATURES:

Material:

- 1010 Cold Rolled 14 Gauge Steel Offers Superior Strength and Hardness

Finish:

- Tough, Durable Black Wrinkle Powder Coat Finish Resists Scratches, Weather, Gasoline, Diesel, Oil & Salts

Convenience:

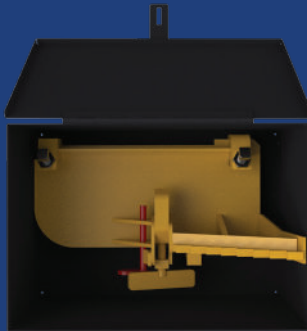
- Heavy-Duty Carrying Handles

Security:

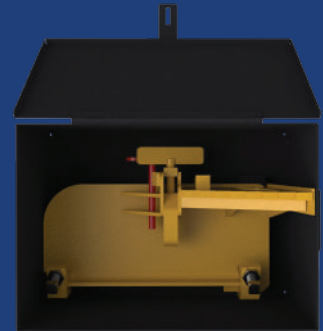
- Locking Hasp for Padlocks



LEFT-HAND THROW



RIGHT-HAND THROW



*Padlock Not Included



MODEL #	DIMENSIONS	WEIGHT
DB-1	19.34" (W) x 12.075" (H) x 13.25" (D) 491.24 mm (W) x 306.70 mm (H) x 336.50 mm (D)	30 lbs. (13.61 kg)



HINGED DERAILS

LOW-PROFILE HINGED DERAILS: HD-3, HD-4, HD-5, HD-6

FEATURES:

- Fabricated from Tough Carbon Steel
- Will Derail All Rolling Stock including 6 Axle Mainline Locomotives
- Two Sizes Cover Rail Sizes 70 to 141 lbs.
- Sits only 2-3/4" (69.85 mm) Above the Top of Rail Head
- Unique Design Eliminates Tie Strapping or Rail Braces on the Field Side of Rails
- Can be Padlocked to the Rail Head On or Off the Rail to Ensure Visibility and Safety, as well as, Prevent Unauthorized Removal

MODEL #	TYPE	THROW DIRECTION	RAIL SIZE	WEIGHT
HD-3L	SINGLE	LEFT	4-5/8" to 6-1/2" (70-110 lbs.)	150 lbs. (68 kg)
HD-3R	SINGLE	RIGHT	4-5/8" to 6-1/2" (70-110 lbs.)	150 lbs. (68 kg)
HD-4L	SINGLE	LEFT	6-5/8" to 7-1/16" (112-141 lbs.)	150 lbs. (68 kg)
HD-4R	SINGLE	RIGHT	6-5/8" to 7-1/16" (112-141 lbs.)	150 lbs. (68 kg)
HD-5	DOUBLE	BiDIRECTIONAL	4-5/8" to 6-1/2" (70-110 lbs.)	182 lbs. (83 kg)
HD-6	DOUBLE	BiDIRECTIONAL	6-5/8" to 7-1/16" (112-141 lbs.)	182 lbs. (83 kg)
HDF	STAFF CAN BE USED WITH ALL HINGED DERAILS			6 lbs. (3 kg)
HDHF	AUTOMATIC STAFF WITH CONNECTING ROD CAN BE USED WITH ALL HINGED DERAILS			20 lbs. (9 kg)
SS	TARGET STAND CAN BE USED WITH ALL HINGED DERAILS			40 lbs. (18 kg)



HD-5 with HDF Staff and RF-9D Flag



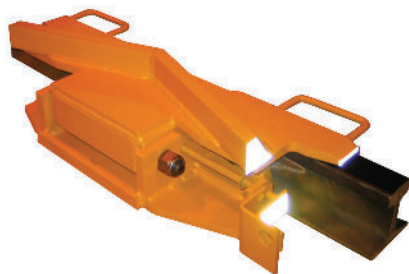
HD-3 with HDHF Staff and RF-2D Flag



HD-3 with SS target stand.

NOTE: FLAGS, STAFFS, AND TARGET STANDS SOLD SEPARATELY.

HINGED DERAILS: HDM-60, HDM-85 (MINES)



FEATURES:

- Designed Specifically for Mines
- Sits 2-5/8" Above Rail
- Reflective Material Adds Safety

MODEL #	TYPE	LENGTH	RAIL SIZE	WEIGHT
HDM-60	DOUBLE	30" (762 mm)	60 lbs. ASCE	120 lbs. (54 kg)
HDM-85	DOUBLE	30" (762 mm)	85 lbs. ASCE	127 lbs. (58kg)

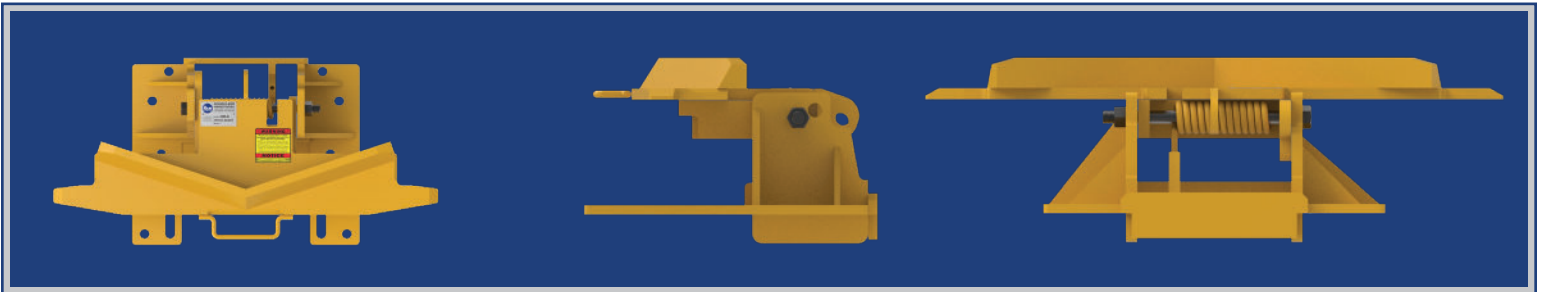
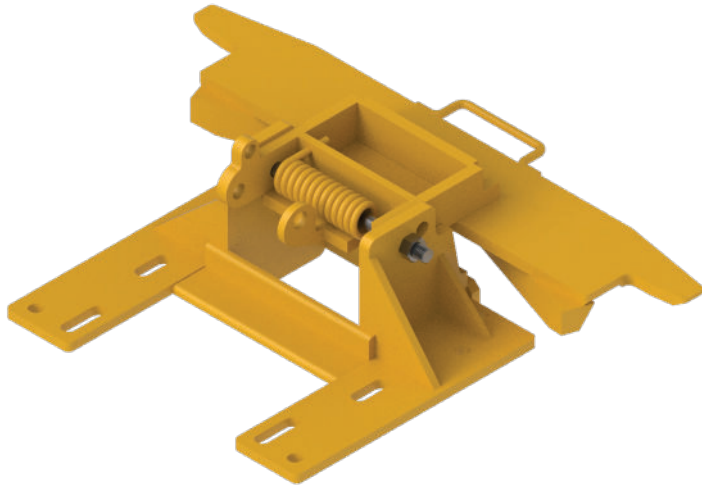


SPRING ASSISTED DOUBLE HINGED DERAILS

nolancompany.com

FEATURES:

- **SPRING ASSISTED** Greatly Reduces Effort Needed to Lift Head On & Off Rail
- Fabricated from Tough Carbon Steel
- Will Derail ALL Rolling Stock
- Sits Only 2 3/4" Above Top of Rail Head
- Can Be Padlocked On or Off Track for Security



MODEL #	DERIAL TYPE	THROW DIRECTION	RAIL SIZE	WEIGHT
HD-7	DOUBLE	BIDIRECTIONAL	4 5/8" - 6 1/2" (70-110 lbs.)	183 lbs.
HD-8	DOUBLE	BIDIRECTIONAL	6 5/8" - 7 1/16" (112-141 lbs.)	183 lbs.



SLIDING DERAILS

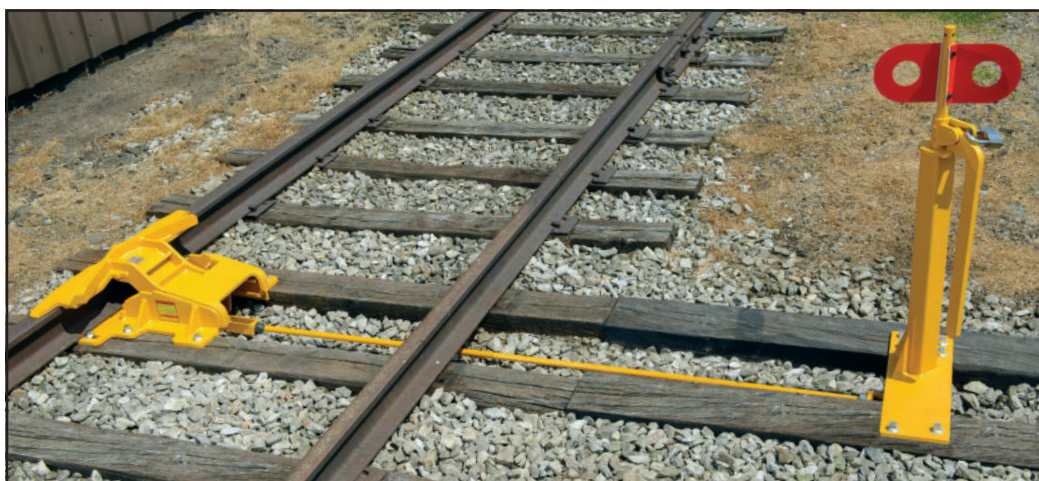
LOW-PROFILE SLIDING DERAILS: SD-3, SD-4, SD-5, SD-6

FEATURES:

- Fabricated from Carbon Steel
- Will Derail All Rolling Stock including 6 Axle Mainline Locomotives
- Two Sizes Cover Rail Sizes 80 to 141 lbs.
- Sits only 2-3/4" (69.85 mm) Above the Top of Rail
- Unique Design Eliminates Tie Strapping or Rail Braces on the Field Side of Rails
- Can be Padlocked to the Rail Head On or Off the Rail to Ensure Visibility and Safety, as well as, Prevent Unauthorized Removal



SD-5



SD-5 with LSE-2 and RA1566-2B (each sold separately)

NOTE: Padlock not included

MODEL #	TYPE	THROW DIRECTION	RAIL SIZE	WEIGHT
SD-3L	SINGLE	LEFT	5" to 6-1/2" (80-110 lbs.)	260 lbs. (117.93 kg)
SD-3R	SINGLE	RIGHT	5" to 6-1/2" (80-110 lbs.)	260 lbs. (117.93 kg)
SD-4L	SINGLE	LEFT	6-5/8" to 7-1/16" (112-141 lbs.)	260 lbs. (117.93 kg)
SD-4R	SINGLE	RIGHT	6-5/8" to 7-1/16" (112-141 lbs.)	260 lbs. (117.93 kg)
SD-5	DOUBLE	BiDIRECTIONAL	5" to 6-1/2" (80-110 lbs.)	285 lbs. (129.27 kg)
SD-6	DOUBLE	BiDIRECTIONAL	6-5/8" to 7-1/16" (112-141 lbs.)	285 lbs. (129.27 kg)



MANUAL OPERATING STANDS

ERGONOMIC OPERATING STAND FOR SLIDING DERAILS: LSE-2A

FEATURES:

- *Ergonomic High Profile Design*
- *Fabricated from Steel Plate*
- *Adjustable Throw*
- *Includes Vane Kit and Adapter for Flag*
- *Mounts Between Two 14' Railroad Ties (Not Included)*

MODEL #	DESCRIPTION	WEIGHT
LSE-2A	OPERATING STAND	91 lbs. (41.28 kg)
RA1566-2A	CONNECTING ROD - NEAR RAIL	27 lbs. (12.25 kg)
RA1566-2B	CONNECTING ROD - FAR RAIL	31 lbs. (14.06 kg)



LSE-2A with RF-2D

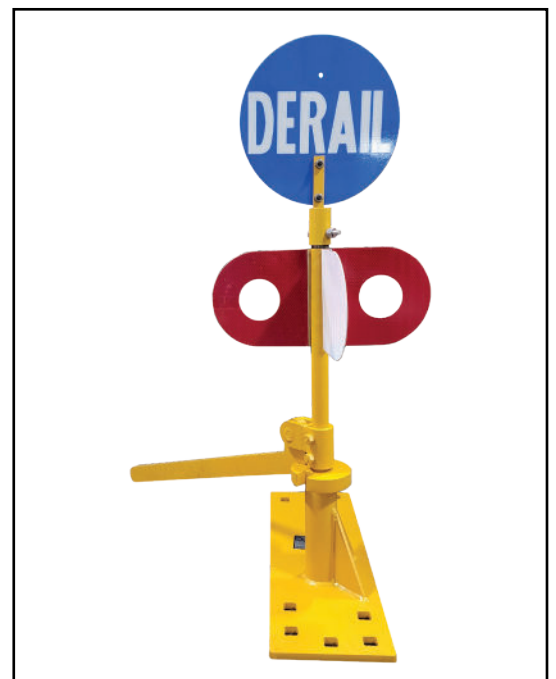
NOTE: Flag Sold Separately

STANDARD OPERATING STAND FOR SLIDING DERAILS: LSF-2A

FEATURES:

- *Fabricated from Steel Plate*
- *Adjustable Throw*
- *Includes Vane Kit and Adapter for Flag*
- *Mounts Between Two 11' Railroad Ties (Not Included)*

MODEL #	DESCRIPTION	WEIGHT
LSF-2A	OPERATING STAND	82 lbs. (37.2 kg)
RA1566-1A	CONNECTING ROD - NEAR RAIL	27 lbs. (12.25 kg)
RA1566-1B	CONNECTING ROD - FAR RAIL	31 lbs. (14.06 kg)



LSF-2A with RF-2D

NOTE: Flag Sold Separately.



AUTOMATED DERAIL OPERATORS

AUTOMATED DERAIL OPERATORS FOR SLIDING DERAILS: AOD-1, EOD-1

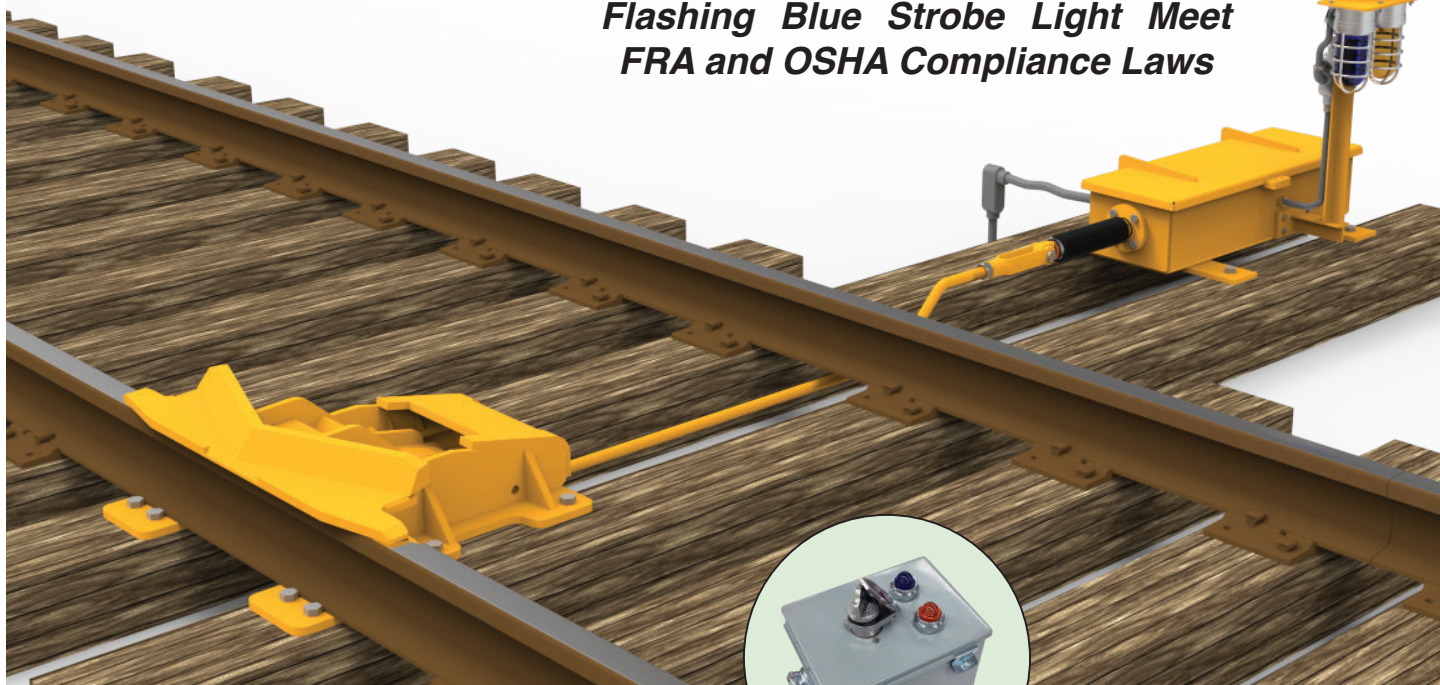
FEATURES:

- Simple Design Makes Set Up Fast and Efficient
- Solid All Welded 1/4" and 1/2" Steel Weather Resistant Construction
- Can be Used with any Sliding Derail Available on the Market
- Improves Safety
- Control Boxes (Sold Separately) can be Set Up in Separate Locations or Used Together to Control One Unit to Multiple Units from a Single Location or Various Locations
- Power-Off Locking Feature

SCAN CODE TO WATCH VIDEO



The Built-In Indicator Lights and Flashing Blue Strobe Light Meet FRA and OSHA Compliance Laws



CB-1

NOTE: CB-1 and Derail Sold Separately

Operated by remote control, Model AOD-1 (air-powered) and Model EOD-1 (electric-powered) can position a derail ON or OFF the rail with just the turn of a key switch.

The Automated Derail operator improves safety and efficiency in the rail yard, repair areas, and loading docks. The unit can be interlocked with overhead plant doors to prevent unauthorized equipment from entering the protected area. Closing the plant door remotely sets the derail protection in service, prohibiting unauthorized rolling stock from entering plant/work area. Opening the plant door remotely removes the derail protection from service permitting authorized rolling stock to enter protected area. The automated derail operator can be used to initiate a number of warning devices such as sirens, lights, and horns in the protected area.

MODEL #	DESCRIPTION
AOD-1	AUTOMATED DERAIL OPERATOR (AIR) WITH PUSH ROD
EOD-1	AUTOMATED DERAIL OPERATOR (ELECTRIC) WITH PUSH ROD
CB-1	KEY ENTRY CONTROL BOX (OPERATES BOTH AOD-1 AND EOD-1) SINGLE-KEY UNIT

PERMANENT AUTOMATIC RERAILERS: PAR-1, PAR-2

FEATURES:

- *Heavy Formed Plate Type Weldment*
- *PAR-1 is Bidirectional, PAR-2 is Single Direction*
- *40 tons (36,287 kg) per Axle Load Capacity*
- *Includes Treated Wood Support Members and Fasteners*

MODEL #	LENGTH *	WIDTH *	WEIGHT *
PAR-1	11' 1" (3,378 mm)	30" (762 mm) BEYOND OUTER EDGE OF EACH RAIL	8,000 lbs. (3,636 kg)
PAR-2	6' 1" (1,854 mm)	30" (762 mm) BEYOND OUTER EDGE OF EACH RAIL	4,500 lbs. (2,045 kg)

*Based on PAR(s) built to standard 56-1/2" (1,435 mm) track gauge



PAR-1

NOTE: PAR(S) ARE MANUFACTURED TO ORDER. CONTACT US FOR A QUOTE. RAIL SIZE AND TRACK GAUGE MUST BE SPECIFIED.

RERAILERS: SWA, SWB, SWC

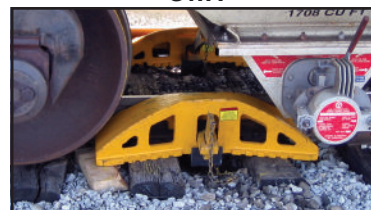
FEATURES:

- *Fabricated from Ductile Alloy*
- *Lugs on Underside Prevents Sliding Past First Tie*
- *Can be Spiked to the Tie or Clamped to the Rail Using SWC*

MODEL #	LOAD CAPACITY	RAIL SIZE	WEIGHT
SWA-IN SWA-OUT	100 tons (90,718.5 kg)	85-100 lbs.	129 lbs. each (59 kg)
SWB-IN SWB-OUT	200 tons (181,437 kg)	110-141 lbs.	181 lbs. each (82 kg)
SWC	Optional clamp for SWA or SWB		27 lbs. (12 kg)



SWA



SWB

RERAILERS: CW-3, CW-4 (MINES/QUARRIES)

FEATURES:

- *Designed Specifically for Mines*
- *Fabricated from Ductile Alloy*
- *Permits Rerailing from Either or Both Sides Simultaneously*

MODEL #	LOAD CAPACITY	RAIL SIZE	WEIGHT
CW-3L CW-3R	15 tons (13,607.8 kg)	30-60 lbs.	50 lbs. each (23 kg)
CW-4L CW-4R	20 tons (18,143.7 kg)	40-85 lbs.	66 lbs. each (30 kg)



CW-3L



CW-3R

NOTE: SW AND CW RERAILERS ARE SOLD PER UNIT, BUT MUST BE USED IN PAIRS.

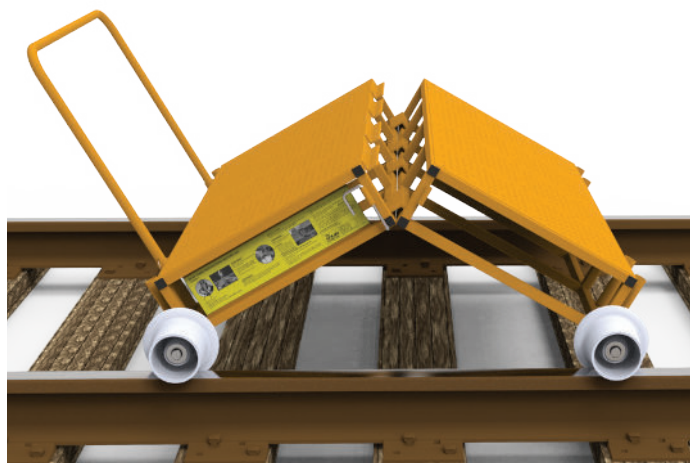


STEEL TOOL AND SUPPLY CARTS

TWO-PIECE STEEL CARTS: TS-4, TS-5, TS-6

FEATURES:

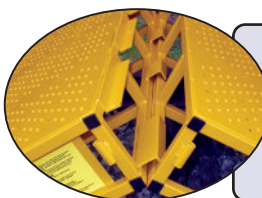
- *Two-Piece Design Enables One Person Assembly*
- *5,000 lb. (2,268 kg) Load Capacity*
- *47-5/8" x 52-1/4" (1,210 mm x 1,327 mm) Steel-perforated Deck*
- *Carts Weigh Less than Original Models*
- *Two-direction Travel with Removable Handle*
- *Parking Brakes on Both Ends of Cart*
- *Insulated Axles with Cast Aluminum or Special Ductile Alloy Wheels*
- *Built for 56-1/2" (1,435 mm) Track Gauge (can be Customized to Fit Wider Track Gauge Only)*
- *No Additional Tools or Hardware Required to Assemble*



TS-4 interlocking halves



The taller handle enables heavier loads to be moved easier.

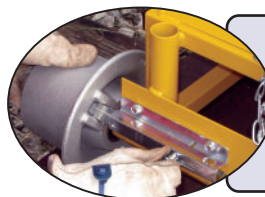


INTERLOCKING ENDS

Join the two interlocking ends by positioning the two halves of the cart, with all the wheels on the rail, while keeping the center raised. Gradually lower the middle of the cart to create one solid unit.

SAFETY LATCH PIN

The safety latch pin locks the two halves together to prevent separation of the assembled cart. After use, simply remove pin and lift upward to separate halves.



PARKING BRAKES

The parking brakes located on both ends of cart secure the cart during loading and unloading, even on inclines.

SCAN CODE TO WATCH VIDEO



MODEL #	LENGTH	WIDTH	WEIGHT	HEIGHT WITH HANDLE	DECK HEIGHT ABOVE RAILS	DECK AREA L x W	LOAD CAPACITY	WHEEL TYPE / DIAMETER
TS-4	56-3/4" (1,441 mm)	63-1/2" (1,613 mm)	168 lbs. (76.2 kg)	35-5/8" (905 mm)	9" (229 mm)	47-5/8" x 52-1/4" (1,210 mm x 1,327 mm)	5,000 lbs. (2,268 kg)	ALUMINUM 5" (127 mm)
TS-5	59-3/4" (1,518 mm)	63-1/2" (1,613 mm)	192 lbs. (87.1 kg)	37-1/8" (943 mm)	10-1/2" (267 mm)	47-5/8" x 52-1/4" (1,210 mm x 1,327 mm)	5,000 lbs. (2,268 kg)	ALUMINUM 8" (203 mm)
TS-6	56-3/4" (1,441 mm)	63-1/2" (1,613 mm)	204 lbs. (92.5 kg)	35-5/8" (905 mm)	9" (229 mm)	47-5/8" x 52-1/4" (1,210 mm x 1,327 mm)	5,000 lbs. (2,268 kg)	DUCTILE ALLOY 5" (127 mm)



STEEL TOOL AND SUPPLY CARTS

ONE-PIECE STEEL CART: TS-7

FEATURES:

- *One-Piece Design*
- *1,000 lb. (454 kg) Load Capacity*
- *36" x 48" (914 mm x 1,219 mm) Steel-perforated Deck*
- *Lightweight - 110 lbs. (49.9 kg)*
- *Parking Brakes on Both Ends of Cart*
- *Two-direction Travel with Removable Handle*
- *Insulated Axles with 5" (127 mm) Cast Aluminum Wheels*
- *Built for 56-1/2" (1,435 mm) Track Gauge (can be Customized to Fit Wider Track Gauge Only)*



MODEL #	LENGTH	WIDTH	WEIGHT	HEIGHT WITH HANDLE	DECK HEIGHT ABOVE RAILS	DECK AREA L x W	LOAD CAPACITY	WHEEL TYPE / DIAMETER
TS-7	43-1/2" (1,105 mm)	63-1/2" (1,613 mm)	110 lbs. (49.9 kg)	35-5/8" (905 mm)	6-3/8" (168 mm)	36" x 48" (914 mm x 1,219 mm)	1,000 lbs. (454 kg)	ALUMINUM 5" (127 mm)



ALUMINUM TOOL AND SUPPLY CARTS

TWO-PIECE ALUMINUM CARTS: ATS-1B, ATS-2B

FEATURES:

- *Two-Piece Design with Hand Holds Enables One Person Assembly*
- *5,000 lb. (2,268 kg) Load Capacity*
- *50" x 49" (1,270 mm x 1,245 mm) Aluminium-perforated Deck*
- *Lightweight Design*
- *Two-direction Travel with Removable Handle*
- *Parking Brakes on Both Ends of Cart*
- *Insulated Axles with 5" (127 mm) or 8" (203 mm) Cast Aluminum Wheels*
- *Built for 56-1/2" (1,435 mm) Track Gauge ONLY*
- *No Additional Tools or Hardware Required to Assemble*



ATS-1B



ATS-1B

MODEL #	LENGTH	WIDTH	WEIGHT	HEIGHT WITH HANDLE	DECK HEIGHT ABOVE RAILS	DECK AREA L x W	LOAD CAPACITY	WHEEL TYPE / DIAMETER
ATS-1B	50" (1,270 mm)	63-1/2" (1,613 mm)	99 lbs. (45 kg)	44" (1,117 mm)	6-15/16" (176 mm)	50" x 49" (1,270 mm x 1,245 mm)	5,000 lbs. (2,268 kg)	ALUMINUM 5" (127 mm)
ATS-2B	50" (1,270 mm)	63-1/2" (1,613 mm)	128 lbs. (58 kg)	45-1/2" (1,156 mm)	8-7/16" (214 mm)	50" x 49" (1,270 mm x 1,245 mm)	5,000 lbs. (2,268 kg)	ALUMINUM 8" (203 mm)



OPTIONAL BRAKING SYSTEM FOR CARTS

DEAD MAN BRAKE SYSTEM: R1663, R1664

FEATURES:

- **Easy to Use** - Brake is fully engaged until lever is squeezed to allow the cart to move.
- **Easy to Install** - Simply replace existing handle with integrated dead man brake system handle.



R1663 shown with ATS-2B cart



MODEL #	FITS CART	WEIGHT
R1663	ATS SERIES (ALUMINUM)	15 lbs. (6.8 kg)
R1664	TS SERIES (STEEL)	12 lbs. (5.4 kg)



RAIL DOLLIES / RAIL PULLER

RAIL DOLLIES: RD-1, RD-2, RD-1-102

FEATURES:

- Built for Standard 56-1/2" (1,435 mm) Track Gauge
- 2,000 lbs. (907 kg) Load Capacity
- Sockets for Stakes and Holes in the Beam Members
- RD-1-102 is Used for 60" (1,524 mm) Paint Scaffolding and Includes a Parking Brake



RD-1-102



RD-1



RD-2

MODEL #	WEIGHT	LOAD CAPACITY	WHEEL TYPE / DIAMETER
RD-1	48 lbs. (22 kg)	2,000 lbs. (907 kg)	ALUMINUM 5" (127 mm)
RD-2	60 lbs. (27 kg)	2,000 lbs.. (907 kg)	ALUMINUM 8" (203 mm)
RD-1-102	60 lbs. (27 kg)	2,000 lbs. (907 kg)	ALUMINUM 5" (127 mm)

RAIL PULLER: RP-1F

FEATURES:

- Fabricated from Carbon Steel
- Convenient Locking Wedge
- Maximum Load Rating is 7,200 lbs. (3,266 kg)

MODEL #	CLEVIS PIN DIAMETER	RAIL SIZE	WEIGHT
RP-1F	1-3/8" (35 mm)	100-141 lbs. (45-64 kg)	46 lbs. (21 kg)



RP-1F



TRACK DOLLIES

TRACK DOLLIES: TD-4, TD-5, TD-6

FEATURES:

- Fully-Welded All Steel Square-Tube Frame
- Perforated Steel Deck
- 1,500 lbs. (680 kg) Load Capacity
- Double Flanged Cast Aluminum Wheels
- TD-6 Offers Stabilizing Roller on a Telescoping Axle to Accept Irregular Sized Loads



TD-4



TD-5



TD-6

MODEL #	LENGTH	WIDTH	WEIGHT	HEIGHT WITH HANDLE	DECK HEIGHT ABOVE RAILS	LOAD CAPACITY	WHEEL TYPE / DIAMETER	WHEEL MODEL #
TD-4	46" (1,168 mm)	15-1/2" (394 mm)	74 lbs. (34 kg)	34-1/4" (870 mm)	8-1/4" (210 mm)	1,500 lbs. (680 kg)	ALUMINUM 5" (127 mm)	271
TD-5	36-1/4" (920 mm)	14" (356 mm)	58 lbs. (26 kg)	34-1/4" (870 mm)	8-1/4" (210 mm)	1,500 lbs. (680 kg)	ALUMINUM 5" (127 mm)	271
TD-6	36-1/32" (915 mm)	23-3/4" (603 mm)	87 lbs. (40 kg)	32-1/2" (825 mm)	10-1/8" (257 mm)	1,500 lbs. (680 kg)	ALUMINUM 5" (127 mm)	271



TS SERIES WHEELS/AXLE ASSEMBLIES

CAST REPLACEMENT WHEELS: TS SERIES

FEATURES:

- 5" or 8" Diameter with Bearings
- Heat-treated Aluminum Wheel or Ductile Alloy
- 1,250 lbs. (567 kg) Load Capacity per Wheel
- Accepts 1" Diameter Axle



TS-12



TS-12A



TS-13

MODEL #	DIAMETER	WHEEL MATERIAL	WEIGHT	LOAD CAPACITY PER WHEEL	BORE DIAMETER
TS-12	5" (127 mm)	ALUMINUM	6-1/2 lbs. (3 kg)	1,250 lbs. (567 kg)	1" (25.4 mm)
TS-12A	8" (203 mm)	ALUMINUM	11 1/2 lbs. (5 kg)	1,250 lbs. (567 kg)	1" (25.4 mm)
TS-13	5" (127 mm)	DUCTILE ALLOY	14 lbs. (6 kg)	1,250 lbs. (567 kg)	1" (25.4 mm)

WHEEL/AXLE ASSEMBLIES: AATS SERIES

INCLUDES:

- 5" or 8" Wheel with Bearings
- Stub Axle
- Axle Tube
- 2 Insulating Bushings
- 2 Snap Rings
- Washer



AATS-12 *Assembly Required

MODEL #	DIAMETER	WHEEL MATERIAL	INSULATED	WEIGHT	LOAD CAPACITY PER PAIR	AXLE DIAMETER
AATS-12	5" (127 mm)	ALUMINUM	YES	11 lbs. (5 kg)	2,500 lbs. (1,141 kg)	1" (25.4 mm)
AATS-12A	8" (203 mm)	ALUMINUM	YES	17 lbs. (8 kg)	2,500 lbs. (1,141 kg)	1" (25.4 mm)
AATS-13	5" (127 mm)	DUCTILE ALLOY	YES	20 lbs. (9 kg)	2,500 lbs. (1,141 kg)	1" (25.4 mm)



7000 SERIES WHEELS/AXLE ASSEMBLIES

CAST REPLACEMENT WHEELS: 7000 SERIES

FEATURES:

- 16" or 20" Diameter
- Tread and Flange Conforms to AREMA Standards
- Made from Ductile Alloy



7001



7005



7013

MODEL #	DIAMETER	INSULATED	WHEEL MATERIAL	WEIGHT	LOAD CAPACITY PER WHEEL	BORE DIAMETER
7001-50TI	16" (406 mm)	Yes	Ductile Alloy	108 lbs. (50 kg)	12,500 lbs. (5,670 kg)	3" (76.2 mm)
7001-50TN	16" (406 mm)	No	Ductile Alloy	112 lbs. (51 kg)	12,500 lbs. (5,670 kg)	3" (76.2 mm)
7005-30TI	16" (406 mm)	Yes	Ductile Alloy	82 lbs. (37 kg)	2,850 lbs. (1,293 kg)	2" (50.8 mm)
7005-30TN	16" (406 mm)	No	Ductile Alloy	82 lbs. (37 kg)	2,850 lbs. (1,293 kg)	2" (50.8 mm)
7013-30TI	20" (508 mm)	Yes	Ductile Alloy	153 lbs. (69 kg)	2,850 lbs. (1,293 kg)	2" (50.8 mm)
7013-50TN	20" (508 mm)	No	Ductile Alloy	152 lbs. (68 kg)	12,500 lbs. (5,670 kg)	3" (76.2 mm)

*SPECIAL BORE DIAMETER AVAILABLE UPON REQUEST

WHEEL / AXLE ASSEMBLIES: 74 SERIES

INCLUDES:

- Two 16" or 20" Wheels with Pillowblock Bearings
- Tapered Steel Axle



7423-50

7404-50

7463-30



7404-50

MODEL #	DIAMETER	WHEEL MATERIAL	INSULATED	WEIGHT	LOAD CAPACITY 2 AXLES	AXLE DIAMETER
7401-30	16" (406 mm)	DUCTILE ALLOY	Yes	235 lbs. (107 kg)	10,000 lbs. (4,563 kg)	2" (50.8 mm)
7463-30	16" (406 mm)	DUCTILE ALLOY	No	235 lbs. (107 kg)	10,000 lbs. (4,563 kg)	2" (50.8 mm)
7404-50	16" (406 mm)	DUCTILE ALLOY	No	400 lbs. (181 kg)	40,000 lbs. (18,144 kg)	3" (76.2 mm)
7462-50	16" (406 mm)	DUCTILE ALLOY	Yes	400 lbs. (181 kg)	40,000 lbs. (18,144 kg)	3" (76.2 mm)
7423-50	20" (508 mm)	DUCTILE ALLOY	No	480 lbs. (218 kg)	40,000 lbs. (18,144 kg)	3" (76.2 mm)



PUSH CARS / Tow Bars

PUSH CARS: PC-10S, PC-10W

FEATURES:

- Built for standard 56-1/2" (1,435 mm) Track Gauge.
- 10,000 lb. (4,536 kg) Load Capacity
- Structural Steel Frame
- Steel Treadplate or Treated Tongue-and-Groove Wood Deck with Angle-Iron Frame
- Rigid, Structural-Steel Frame
- One-Piece Continuous Drawbar with Reinforced Eye
- One-Piece Solid Axle with Pillow-Block Roller Bearings
- Center Lift Ring Aids in Handling Empty Cart

CUSTOM OPTIONS:

- Stake Pockets
- Sideboards
- Manual Park Brakes for 2 or 4 Wheels



PC-10S

MODEL #	LENGTH	WIDTH	WEIGHT	DECK HEIGHT ABOVE RAILS	DECK AREA L x W	LOAD CAPACITY	COUPLING HEIGHT
PC-10S	96" (2,438mm)	67-1/2" (1,714 mm)	1,200 lbs. (544 kg)	18-1/2" (470 mm)	67-1/2" x 84-1/2" (1,708 mm x 2,146 mm)	10,000 lbs. (4,536 kg)	14-1/4" (362 mm)
PC-10W	96" (2,438 mm)	67-3/8" (1,711 mm)	1,200 lbs. (544 kg)	19-7/8" (505 mm)	67-3/8" x 85" (1,711 mm x 2,159 mm)	10,000 lbs. (4,536kg)	14-1/4" (362 mm)

TOW BARS: R1451, R1453

FEATURES:

- Square-tube design increases strength
- Heavy-duty construction

MODEL #	LENGTH	WEIGHT	HOLE DIAMETER
R1453-1	42" (1,067 mm)	38 lbs. (18 kg)	1-1/4" (31.75 mm)
R1453-5	72" (1,828mm)	50 lbs. (23 kg)	1-1/4" (31.75 mm)
R1453-2	96" (2,438 mm)	70 lbs. (32 kg)	1-1/4" (31.75 mm))
R1451	120" (3,048 mm)	61 lbs. (28 kg)	1-3/16" (30.16 mm)
R1453-3	192" (4,877 mm)	127 lbs. (58 kg)	1-1/4" (31.75 mm)
R1453-4	264" (6,706 mm)	155 lbs. (71 kg)	1-1/4" (31.75 mm)



***WE CAN CUSTOM-FABRICATE SPECIFIC LENGTH TOWBARS TO FIT YOUR NEEDS.**

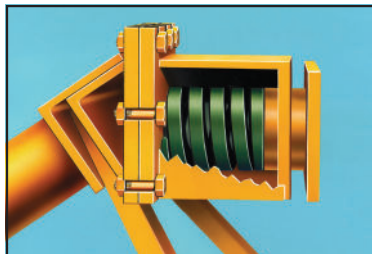


BUMPING POSTS

BUMPING POSTS: HDBP, HDBP-TR

FEATURES:

- *HDBP Clamps to Rails*
- *HDBP-TR Bolts Through the Rails*
- *Built for 56-1/2" (1,435 mm) Track Gauge*
- *Both Models Can Be Used with the Optional CH Cushion Head*



CH (optional)



HDBP

MODEL #	TYPE	LENGTH	YIELD POINT	WEIGHT
HDBP	CLAMP ON	76-5/8" (1,946 mm)	804,000 lbs. (364,602 kg)	1,150 lbs. (522 kg)
HDBP-TR	BOLT ON	76-5/8" (1,946 mm)	804,000 lbs. (364,602 kg)	1,150 lbs. (522 kg)
CH	OPTIONAL (BOTH)	N/A	N/A	430 lbs. (195 kg)



CAR STOPS

CAR STOPS: CS-70

FEATURES:

- Fabricated from Carbon Steel
- Hinged-Type Double-ended
- Permanent Installation
- Can be Padlocked in Up or Down Position (Padlock not included)



CS-70L and CS-70R

MODEL #	HEIGHT ABOVE RAILS	RAIL SIZE	WEIGHT
CS-70L CS-70R	15" (381 mm)	ASCE & ARA-A 90 - 141 lbs.	135 lbs. (61 kg) each

CAR STOPS: CS-60

FEATURES:

- Fabricated from Ductile Alloy
- Hinged-Type Single-ended
- Permanent Installation
- Can be Padlocked in Up or Down Position (Padlock not included)



CS-60L and CS-60R

MODEL #	HEIGHT ABOVE RAILS	RAIL SIZE	WEIGHT
CS-60L CS-60R	15" (381 mm)	ASCE & ARA-A 90 - 141 lbs.	91 lbs. (41 kg) each

NOTE: ALL CAR STOPS ARE SOLD PER UNIT, BUT MUST BE USED IN **PAIRS**.



CAR STOPS

CAR STOPS: CS-50

FEATURES:

- *Fabricated from Ductile Alloy*
- *Single-ended*
- *Easy Bolt and Clamp Installation*
- *No Drilling Required*



CS-50

MODEL #	HEIGHT ABOVE RAILS	RAIL SIZE	WEIGHT
CS-50	16-5/8" (422 mm)	4-1/2" to 7-7/16" 60 - 141 lbs.	135 lbs. (61 kg) each

CAR STOPS: CCS-2

FEATURES:

- *All-welded Steel Construction*
- *Cushioned Stops Transfer Impact Force to Tie and Ballast*
- *4 Bolt Installation (per pair)*
- *No Holes to Drill*



CCS-2

MODEL #	HEIGHT ABOVE RAILS	RAIL SIZE	WEIGHT
CCS-2	17" (432 mm)	4-1/2" to 7-7/16" 60 - 141 lbs.	180 lbs. (82 kg) each

NOTE: ALL CAR STOPS ARE SOLD PER UNIT, BUT MUST BE USED IN **PAIRS**.



CAR BLOCKS

CAR BLOCKS: C-1, C-2

FEATURES:

- *Lightweight - Fabricated from Carbon Steel*
- *Rotating Cam Locking Device*
- *Easy to Apply*



C-1



C-2

MODEL #	WHEEL DIAMETER	RAIL SIZE	WEIGHT
C-1	10", 12", 24", 34" (254 mm, 305 mm, 610 mm, 864 mm)	60-85 lbs.	30 lbs. (14 kg)
C-2	28", 36" (711 mm, 914 mm)	85-140 lbs.	38 lbs. (17kg)

CAR BLOCKS: C-3

FEATURES:

- *Specifically Designed for Crane Rail*
- *Lightweight - Fabricated from Carbon Steel*
- *Rotating Cam Locking Device*
- *Easy to Apply*

MODEL #	WHEEL DIAMETER	RAIL SIZE	WEIGHT
C-3	33", 36" (898 mm, 914 mm)	105-175 lbs	45 lbs. (20 kg)



C-3

IMPORTANT NOTE: Car Blocks are designed to be used on **FLAT TRACK** only.



RAIL SKATES

RAIL SKATES: RS-3

FEATURES:

- *Lightweight - Fabricated from High Strength Steel*
- *More Durable*
- *Flared Guide Lugs*
- *Prevents Flat Spots on Wheels*
- *Ideal for Flat Switching and Hump Yard Applications*
- *Easy to Apply*

MODEL #	RAIL SIZE	WEIGHT
RS-3	80-141 lbs.	20 lbs. (9 kg)



RS-3

RAIL SKATES: RS-1, RS-2

FEATURES:

- *Made from Cast Special Ductile Alloy*
- *Prevents Flat Spots on Wheels*
- *Easy to Apply*



RS-1



RS-2

MODEL #	RAIL SIZE	WEIGHT
RS-1	80-141 lbs.	15 lbs. (7 kg)
RS-2	80-141 lbs.	30 lbs. (14 kg)



SWITCH POINT PROTECTORS

SWITCH POINT PROTECTORS: SPP

FEATURES:

- Made from Manganese Steel
- Bolts Securely to Inside of Straight Main Rail Leading to Switch
- Gets Stronger with Each Deflection
- Reversible - Doubles Service Life

INCLUDES:

- Manganese Steel Face Plate
- Steel Shim
- Steel Back-Up Plate
- 2 Track Bolts
- 2 Nyloc Nuts
- 2 Spring Washers



SPP-6

MODEL #	RAIL SIZES	WEIGHT
SPP-1	ASCE: 90lbs. ARA-B: 100 lbs. PS: 100 lbs.	11 lbs. (4.99 kg)
SPP-2	AREMA: 100, 110 lbs. ARA-A: 100 lbs.	11 lbs. (4.99 kg)
SPP-3	ARA-A: 90 lbs. ASCE: 100 lbs.	12 lbs. (5.44 kg)
SPP-4	NYC: 105 lbs. PS: 130 lbs.	12 lbs. (5.44 kg)
SPP-6	AREMA: 112, 115, 119 lbs.	12.5 lbs. (5.67 kg)
SPP-7	AREMA: 133 lbs.	15 lbs. (6.80 kg)
SPP-8	AREMA: 141 lbs.	13 lbs. (5.90 kg)
SPP-9	AREMA: 131, 132, 136, 140 lbs. AB: 141 lbs. NYC: 127 lbs.	14.5 lbs. (6.58 kg)
SPP-15	AREMA: 130 lbs.	15 lbs. (6.80 kg)
SPP-16	ASCE: 85 lbs.	11 lbs. (4.99kg)
SPP-17	ASCE: 80 lbs..	11 lbs. (4.99kg)



SPP-1



FLASHING LIGHTS

FLASHING LIGHTS: FL-B-1, FL-R-1, FL-W-1

FEATURES:

- Solar Switch Controlled
- Use Two 6 Volt Batteries
- Easy to Attach

MODEL #	COLOR	WEIGHT
FL-B-1	BLUE	2 lbs. (1 kg)
FL-R-1	RED	2 lbs. (1 kg)
FL-W-1	WHITE	2 lbs. (1 kg)



FL-R-1, FL-W-1, and FL-B-1

MAGNETIC FLASHING LIGHTS: FL-B-1M, FL-R-1M, FL-W-1M

FEATURES:

- Rare Earth Magnets
- Solar Switch Controlled
- No Installation Required
- Use Two 6 Volt Batteries

MODEL #	COLOR	WEIGHT
FL-B-1M	BLUE	3 lbs.
FL-R-1M	RED	3 lbs.
FL-W-1M	WHITE	3 lbs.



FL-R-1M



STAFFS

STAFFS: BFC, BFP, BFS BFSH, BFSM

FEATURES:

- *Special Welded Fixture (Accommodates Flashing Lights) on All Staffs Except HDHF*
- *BFP and BFSH Can Be Padlocked in Up or Down Position*
- *Easy to Apply*



BFC Clamped
8 lbs. (3.6 kg)



BFP Hinged
19 lbs. (8.6 kg)



BFS Spiked
6 lbs. (2.7 kg)



BFSH Spiked/Hinged
10 lbs. (4.5 kg)



BFSM Magnetic Base
8 lbs. (3.6 kg)

NOTE: FLAGS are sold separately.





SIGNAL FLAGS

SIGNAL FLAGS: RF SERIES

FEATURES:

- Double-Sided Engineer Grade Prismatic Reflective Sheeting
- Reflects Light Back to the Source
- Aluminum Constuction
- Will Never Rust or Fade
- Securely Mounts to All of Nolan's Signal Flag Staffs
- Meet Federal Railroad Administration (FRA), OSHA, and ASTM Specifications



MODEL #	SIZE (L x W) OR DIA.	WEIGHT
RF-1D	12" x 15" (305 mm x 381 mm)	2 lbs. (1 kg)
RF-2D	11" DIAMETER (279 mm)	2 lbs. (1 kg)
RF-3D	12" x 15" (305 mm x 381 mm)	2 lbs. (1 kg)
RF-4D	12" x 15" (305 mm x 381 mm)	2 lbs. (1 kg)
RF-5D	12" DIAMETER (305 mm)	2 lbs. (1 kg)
RF-6D	12" x 15" (305 mm x 381 mm)	2 lbs. (1 kg)
RF-7D	12" x 15" (305 mm x 381 mm)	2 lbs. (1 kg)
RF-9D	11" DIAMETER (279 mm)	2 lbs. (1 kg)
RF-10D	12" x 15" (305 mm x 381 mm)	2 lbs. (1 kg)
RF-11D	12" x 15" (305 mm x 381 mm)	2 lbs. (1 kg)
RF-12D	12" x 15" (305 mm x 381 mm)	2 lbs. (1 kg)
RF-13D	13" DIAMETER (330 mm)	2 lbs. (1 kg)
RF-16D	10" DIAMETER (254 mm)	2 lbs. (1 kg)
RF-17D	18" DIAMETER (457 mm)	2 lbs. (1 kg)



RF-1D



RF-3D



RF-5D



RF-7D



RF-10D



RF-12D



RF-16D



RF-2D



RF-4D



RF-6D



RF-9D



RF-11D



RF-13D



RF-17D



WHEEL CHOCKS

WHEEL CHOCKS: WC-1, WC-11, WC-11F, WC-11-101

FEATURES:

- Easy to Apply for Temporary Blocking of All Types of Rail Cars
- Designed for Use on Grades of Less than 1%
- All Models Fit 60-141 lbs. (27-64 kg) Rail
- Fit Wheel Sizes: 30", 33", 36", 40", 42"

MODEL #	DESCRIPTION	WEIGHT
WC-1	SINGLE CHOCK WITH HANDLE	8 lbs. (4 kg)
WC-11	TWO WC-1 LINKED WITH CHAIN	20 lbs. (9 kg)
WC-11F	TWO WC-1 LINKED WITH CHAIN FOR <u>FLUSH RAIL</u>	13 lbs. (6 kg)
WC-11-101	TWO WC-1 CHOCKS LINKED WITH CHAIN & TENSIONER (LOCKABLE - PADLOCK NOT INCLUDED)	20 lbs. (9 kg)



WC-1



WC-11

WHEEL CHOCKS WITH STAFF: WC-21

FEATURES:

- Wheel Chocks with Low Profile Staff

MODEL #	DESCRIPTION	WEIGHT
WC-21	WC-2 LINKED WITH CHAIN TO WC-1	22 lbs. (10 kg)



WC-21

NOTE: FLAG SOLD SEPARATELY.



Office: 1016 Ninth Street SW
Canton, Ohio 44707

Fax: 1-800-225-0984
or 1-330-453-7449

Phone: 1-800-297-1383
or 1-330-453-7922

Website: nolancompany.com



Photo Credit: Lisa DeLeone (cover)



Printed in U.S.A.

© The Nolan Company

7th printing 6/25