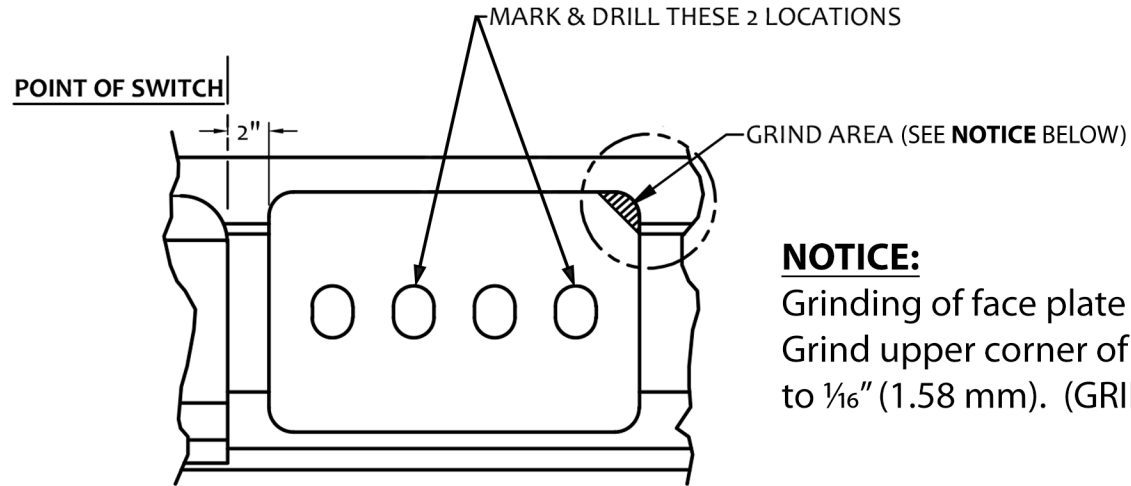


MODEL NO.	RAILS	MANGANESE STEEL FACE PLATE	CAST STEEL SHIM	BACKUP PLATE
<input type="checkbox"/> SPP-1	90lb ASCE; 100lb ARA-B; 100 PS	SPP-100-F	SPP-90-S	R1271C-P
<input type="checkbox"/> SPP-2	100lb & 110lb AREMA; 100lb ARA-A	SPP-110-F	SPP-121-S	R1271C-P
<input type="checkbox"/> SPP-3	90lb ARA-A & 100lb ASCE	SPP-100-F	SPP-120-S	R1271C-P
<input type="checkbox"/> SPP-4	105lb NYC (DUDLEY); 130lb PS	SPP-110-F	SPP-120-S	R1271C-P
<input type="checkbox"/> SPP-6	112lb, 115lb, & 119lb AREMA	SPP-130-F	SPP-121-S	R1271C-P
<input type="checkbox"/> SPP-7	133lb AREMA	SPP-141-F	SPP-133-S	R1271C-P
<input type="checkbox"/> SPP-8	141lb AREMA	SPP-130-F	SPP-120-S	R1271C-P
<input type="checkbox"/> SPP-9	131lb & 132lb, 136lb, 140lb AREMA; 141 AB; 127lb NYC	SPP-141-F	SPP-132-S	R1271C-P
<input type="checkbox"/> SPP-15	130lb AREMA	SPP-141-F	SPP-90-S	R1271C-P
<input type="checkbox"/> SPP-16	85lb ASCE	SPP-100-F-G	SPP-90-S-M	R1271C-P

**APPLICATION PARAMETERS:**

The Nolan Company's "button-style" Switch Point Protectors are designed for slow speed territory. Ideally suited for rail yards, industrial sites, and private sidings. A maximum speed of **10 mph (16 kph)** is advised. Switch Point Protectors are installed to protect conventional switches where the crossing rate is 1 in 8.25 or No. 8.25. Install the Switch Point Protector on the straight stock rail 2" (50 mm) in front of the switch point tip. (Diagram C) Nolan's Switch Point Protector is available in all standard rail sizes and is reversible to increase service life. Comes complete with manganese-steel face plate, bolts, nuts, spring washers and steel shim.



**NOTICE:**

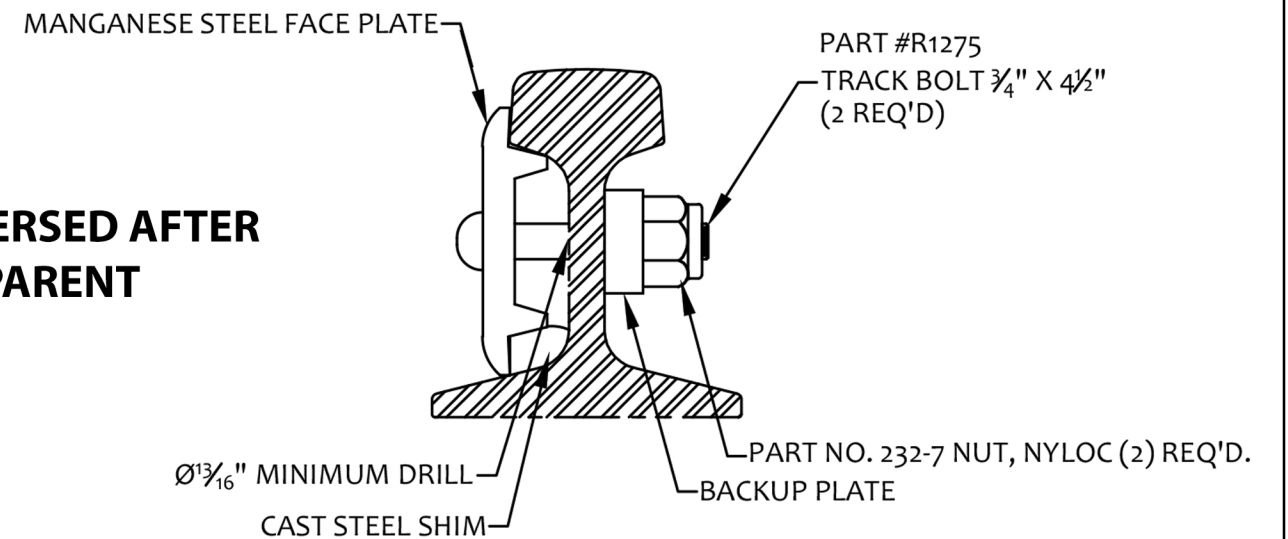
Grinding of face plate may be necessary on worn rail. Grind upper corner of face plate to reduce blunt edge to 1/16" (1.58 mm). (GRIND AREA on Diagram C)

**INSTALLATION INSTRUCTIONS - SWITCH POINT PROTECTOR:**

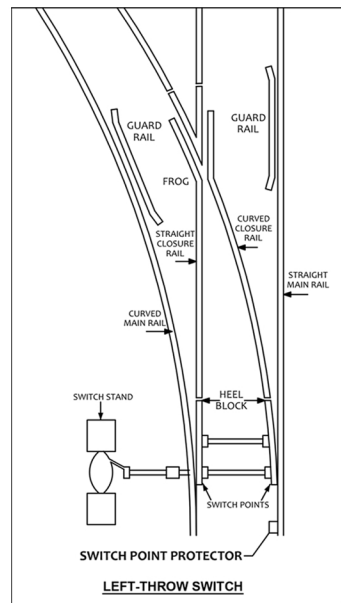
1. Locate switch type (Diagram A and B) and identify switch point location.
2. Edge of switch should be 2" (50 mm) from switch point.
3. Locate switch point face plate, (Diagram C) mark and drill 2 holes @ 1 3/16" (20.63 mm) **minimum** diameter
4. Assemble Switch Point Protector as shown (Diagram D)
5. Tighten bolts: Lubricated - 200 FT/LB Unlubricated - 260FT/LB

**NOTE:**

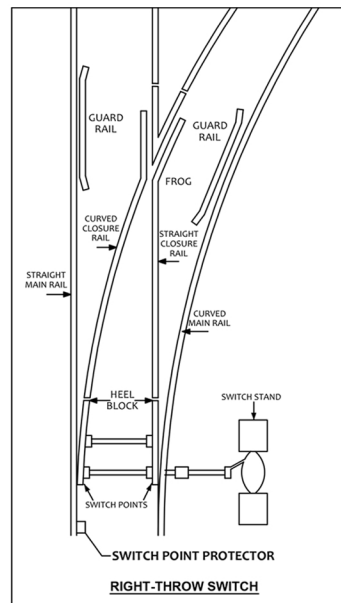
**FACE PLATE MAY BE REVERSED AFTER SUFFICIENT WEAR IS APPARENT**



**DIAGRAM D**



**DIAGRAM A**



**DIAGRAM B**



TOLERANCES (EXCEPT AS NOTED)	
DECIMAL:	.XX±.03 .XXX±.005
FRACTIONAL:	±1/16
ANGULAR:	±2°
MATERIAL:	
SCALE:	FULL
PLOT SCALE:	1/4

the NOLAN company, Bowerston, Ohio			
THE PRINT AND ALL INFORMATION THEREON IS THE PROPERTY OF THE NOLAN COMPANY AND MUST BE KEPT CONFIDENTIAL. THIS INFORMATION MUST NOT BE COPIED OR MADE PUBLIC UNLESS SO AUTHORIZED BY THEM AND IS SUBJECT TO RETURN UPON DEMAND.			
CHECKED BY	DATE	APPROVED BY	DATE
			11/07/12
SWITCH POINT PROTECTORS		FILE NAME	SPP.dwg
		DRAWING NO.	SPP